

# NW100 Density Testing Set

## Quality that can be Measured



www.x-floc.com

Density:  $\rho = \frac{m}{V} \left[ \frac{\text{kg}}{\text{m}^3} \right]$



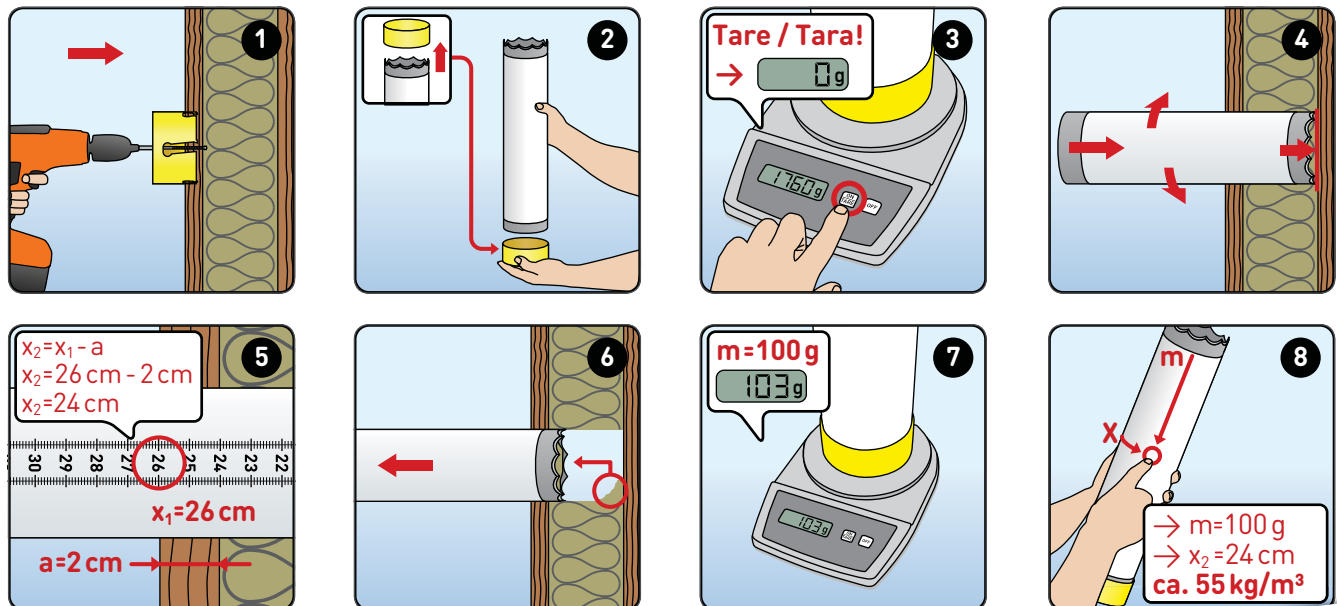
### Measure the quality of your work

The X-Floc NW100 density testing set enables testing of the installation density of installed loose-fill blown-in insulation, for example cellulose, wood fibre, rock wool or glass wool.

The measuring range extends from 40 to 470 mm insulation thickness and an installation density from approx. 25 to 200 kg/m<sup>3</sup>.

The density testing set can be used to test any elements at selected points, e.g. walls, pitched roofs, ceilings and floors. The installation density can be reliably tested, allowing you to check the quality of the insulating work.

### Use



Order Options					
Density testing set					
Product no.					
4349	•	•	•	•	•
5347	•	•	•	•	
8383	•	•	•		•
4348	•	•	•		
3770	•	•			

Option: 80 cm piercing pipe  
Measuring range up to 770 mm

Demo-Videos auf:  
[www.x-floc.com/videos](http://www.x-floc.com/videos)