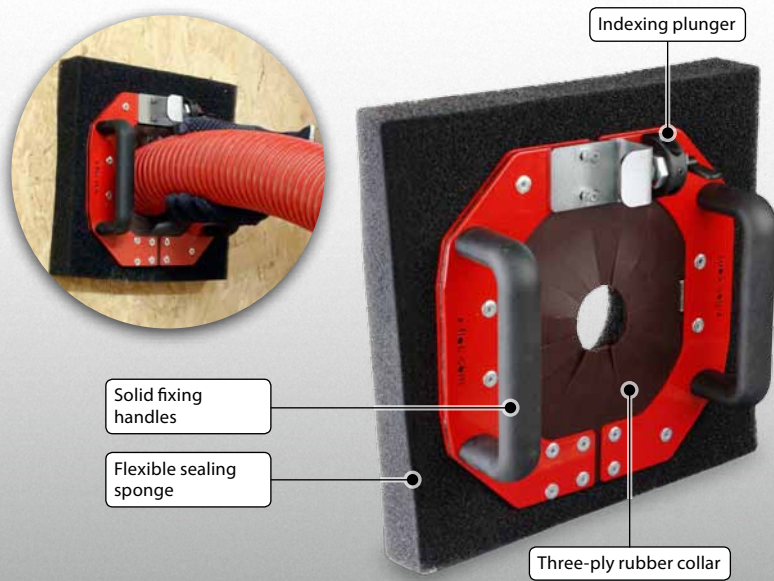
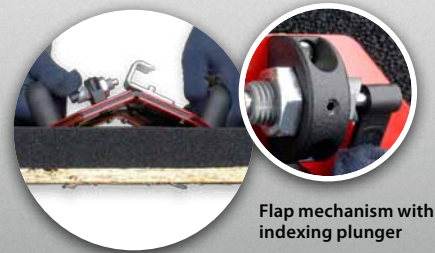


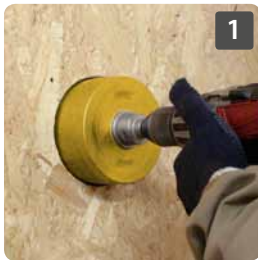
Detachable tubing port for dust-free blowing injection



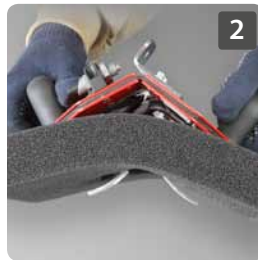
- ➔ Handy tubing port for fastening in the drill hole by folding mechanism and indexing plunger
- ➔ Enables hands-free work with the hose
- ➔ Self-sealing to the cavity board by flexible sealing and by multi-layer rubber collar at the hose inlet



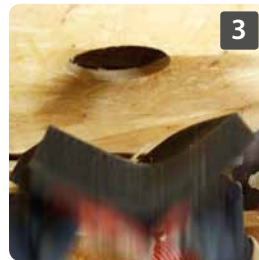
Function



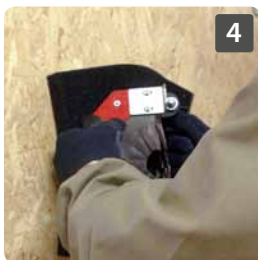
1 Drill a hole ≥ 106.5 mm



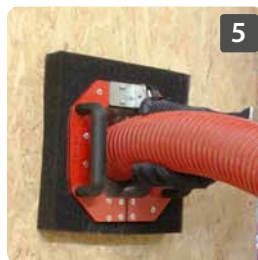
2 Open indexing plunger and fold in hose sleeve



3 Insert tubing port into the injection hole...



4 ...and lock it



5 Insert injection hose

Properties

- ▶ Compatible for board thicknesses from $s = 10 - 35$ mm or $30 - 80$ mm
- ▶ Required drill hole $\varnothing = 106,5$ to 120 mm
- ▶ Compatible for hose diameters NW50/63/75/90 (2"/2 1/2"/3"/3 1/2")
- ▶ Three-ply rubber collar for sealing
- ▶ Flexible sealing to avoid dust emissions from the injection hole
- ▶ Ergonomic indexing plunger for easy opening and locking/single-hand operation
- ▶ Prod. no. 6737 (10 - 35 mm) or 7006 (30 - 80 mm)

Options

- ▶ Sealing sponge with bigger clearance hole (on request)

Accessories

| Image | Description | Prod. no. |
|---|---|---------------|
|  | Pro hole saw $\varnothing 106.5/120$ mm | 6182/ 1869 |
|  | Hole saw complete with ejection system $\varnothing 106.5/120$ mm | 4966/ 5282 |
|  | Sealing cork VK106 | 1948 |
|  | Sealing cork VK120 | 4671 |
|  | Closing plug VS106 | 4673 |
|  | Closing plug VS120 | 4674 |

Layout

